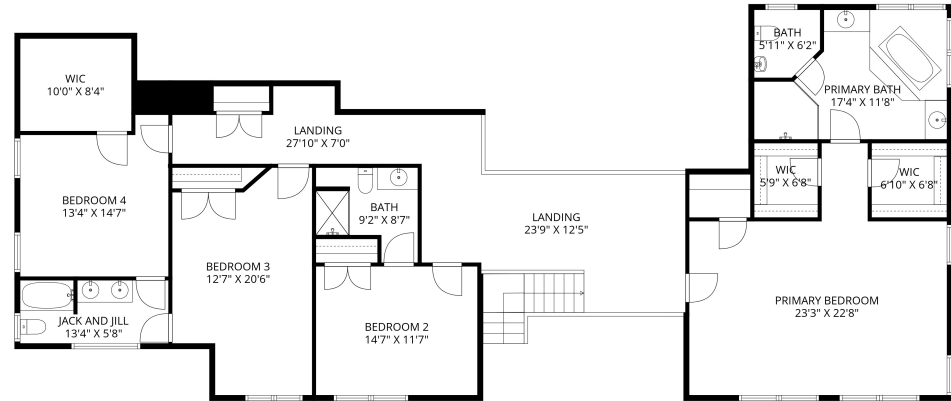
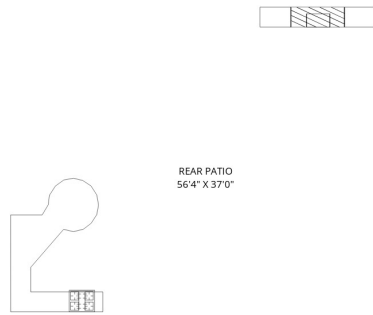
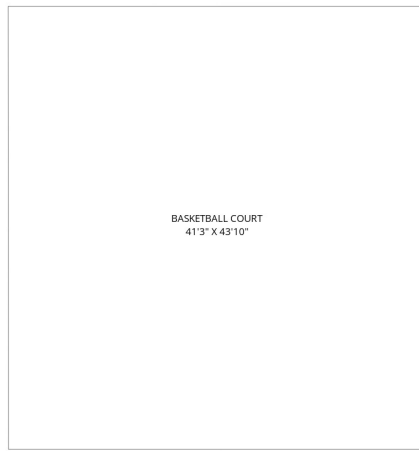


# THE FLOOR PLAN

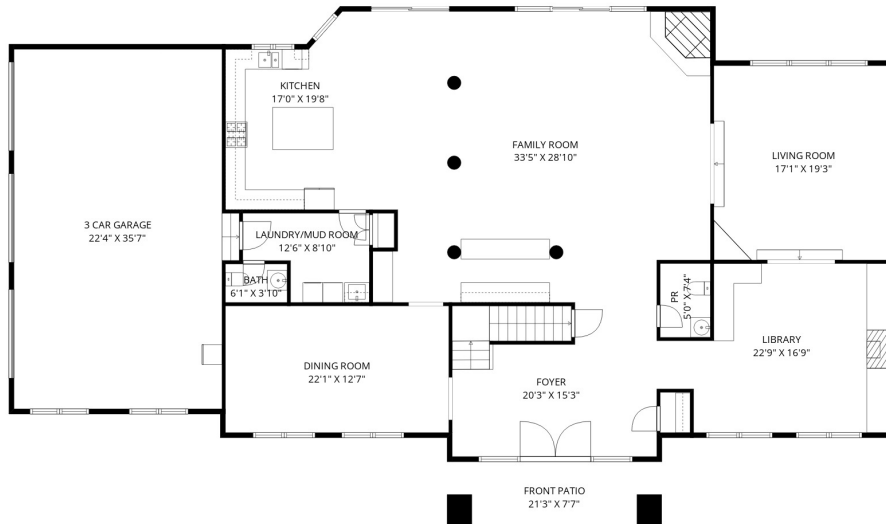
## 22 Thames Drive

### Livingston, New Jersey

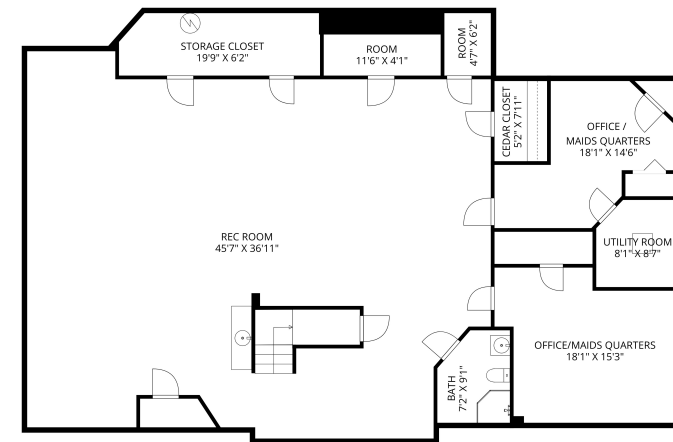
Prominent Properties | Sotheby's INTERNATIONAL REALTY



**SECOND FLOOR**



**FIRST FLOOR**



**LOWER LEVEL**

NOT TO SCALE - This floor plan is provided for illustration purposes only.

Room positions and dimensions are approximate and should be independently measured for accuracy

Sotheby's International Realty® and the Sotheby's International Realty Logo are service marks licensed to Sotheby's International Realty Affiliates LLC and used with permission. NRK of New Jersey, Inc. d/b/a Prominent Properties Sotheby's International Realty fully supports the principles of the Fair Housing Act and the Equal Opportunity Act. Each franchise is independently owned and operated. Any services or products provided by independently owned and operated franchisees are not provided by, affiliated with or related to Sotheby's International Realty Affiliates LLC nor any of its affiliated companies. If your property is listed with a real estate broker, please disregard. It is not our intention to solicit the offerings of other real estate brokers. We are happy to work with them and cooperate fully